

MONTHLY MEMBERSHIP PROGRESS REPORT

LOCATION AUSTRALIA

District 201V6

Results as of: 2/28/2023

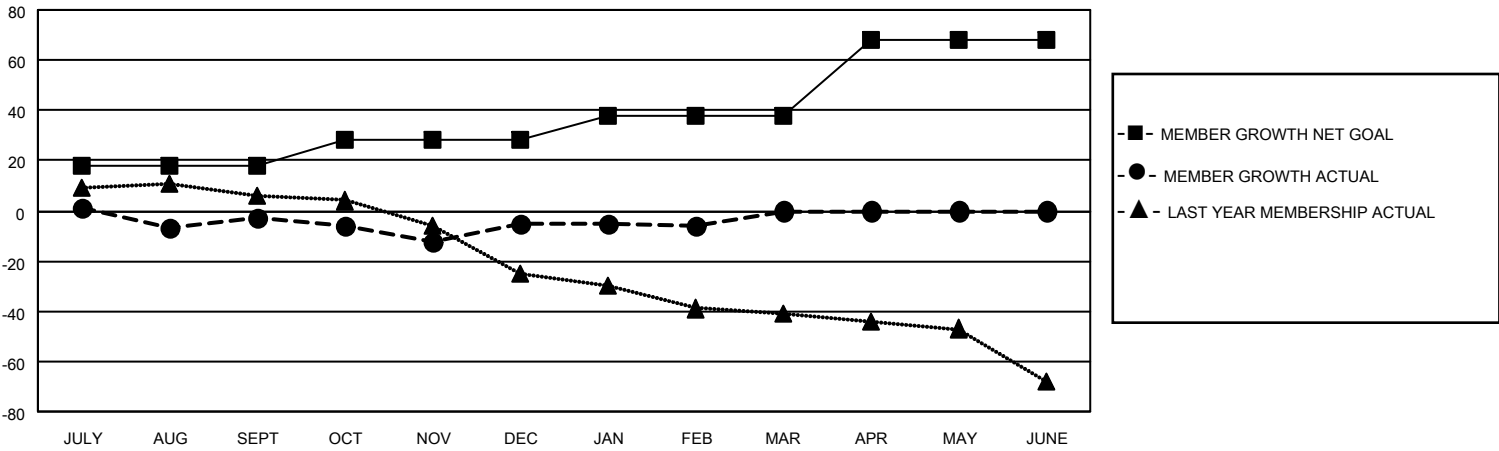
Clubs			
RESULTS FOR 2022-2023			
QUARTER	NEW CLUB GOAL	NEW CLUBS	DROPPED CLUBS
JULY/AUG/SEPT	0	0	0
OCT/NOV/DEC	0	0	0
JAN/FEB/MAR	1	0	0
APR/MAY/JUNE	0	0	0

Members			
RESULTS FOR 2022-2023			
QUARTER	MEMBER GROWTH NET GOAL	MEMBER GROWTH ACTUAL	DROPPED MEMBERS ACTUAL (including transfers)
JULY/AUG/SEPT	18	15	16
OCT/NOV/DEC	10	30	30
JAN/FEB/MAR	10	7	8
APR/MAY/JUNE	30	0	0

GOALS AND ACTUAL NEW CLUBS CUMULATIVE



GOALS AND ACTUAL MEMBERS CUMULATIVE



DROPPED CLUBS: 0

25 CLUBS OF 55 ADDED 1 OR MORE NEW MEMBERS

GENDER DISTRIBUTION

MALE	724 (67.98%)
FEMALE	341 (32.02%)
NON BINARY	0 (0.00%)
PREFER NOT TO ANSWER	0 (0.00%)

DROPPED MEMBERS

[CLICK HERE FOR CUMULATIVE MEMBERSHIP DATA](#)

DECEASED	17
CLUB CANCELLED	0
OTHER	37
TOTAL	54

TOTAL FAMILY UNIT MEMBERS 136

FAMILY MEMBERS PAYING HALF DUES 68